

Cantalupi[®]
LIGHTING

MAGAZINE 2016



LA CULTURA DELLA LUCE

THE ITALIAN ART OF YACHT LIGHTING

 *Cantalupi*[®]
L I G H T I N G



Dear Customer,

The Cantalupi magazine, *La Cultura della Luce*, has been created to give you a panoramic view of that intangible but essential element of beauty that is quality lighting. At Cantalupi we never give up looking for new and creative solutions to lighting challenges and *La Cultura della Luce* has been created to keep you up to date with our research on new technologies, innovative materials and cutting edge applications in lighting. We hope that our labours will spark your ideas.

Enjoy,

Bruno Cantalupi

TEAM

*The world will end
when man ceases to create
art, beauty and light.
Bruno Cantalupi*



ELEONORA BERNERI

As an architect and yacht designer I have years of experience in megayacht construction and have collaborated with some of the most famous architects worldwide. I am interested in lighting and in the opportunity it gives to change the mood and feeling of a space with just the flick of a switch. I enjoy looking for new ways of bringing Cantalupi's "world of light" to life.



MICHELE ORLANDI

I worked for years as a lighting fixtures salesman, but wanted to learn more about what was behind the product I was selling. I read up on the theory of lighting and learned about the production processes and now, thanks also to my contacts with top architects, I have become an interpreter that bridges the space between the client's needs and the producer's potential.



ANDREA LUPPICHINI

I started my career as the designer of mechanical and electrical parts but have always paid special attention to research and the latest developments in the lighting sector. I have a real creative vein and tap the latest innovations for their potential to create new effects through the use of unexpected materials.



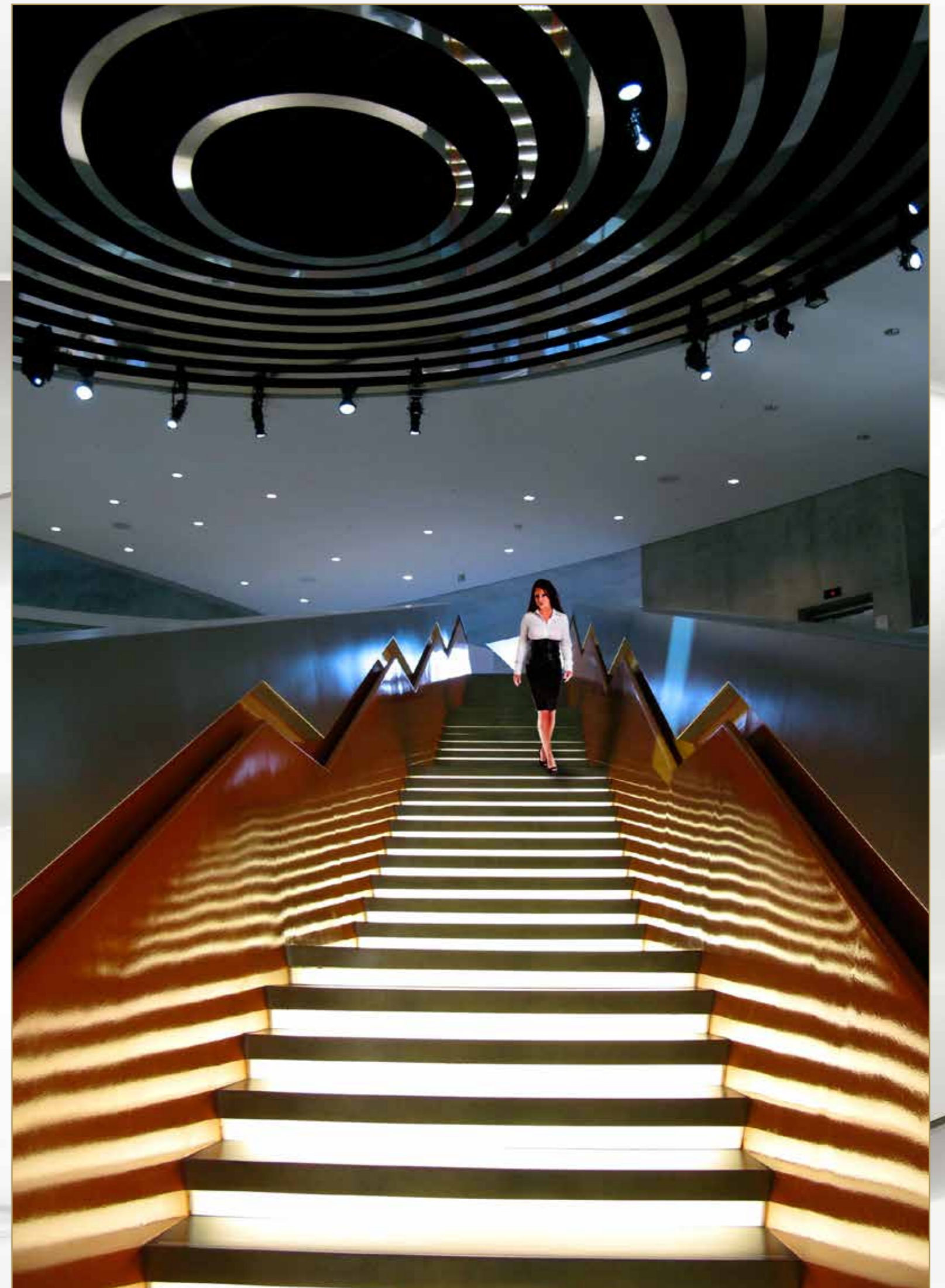
MATTEO CASINI

I earned my degree as architect and engineer at the University of Pisa where I then obtained an honorary fellowship in lighting design. I have years of experience as a lighting designer and technical consultant and I'm involved in research, development and planning collaborations with the University and other large companies and architectural firms. I put my creativity to work finding new solutions and applications that go beyond the potential of traditional lighting solutions to create emotional effects that blend light and materials.

ARCHITECTURE AND LIGHT

*“Architecture is the learned game,
correct and magnificent,
of forms assembled in the light”*

LE CORBUSIER





Natural light has always been used to create mood and emotion.
All too often, on the other hand,
artificial light has mainly been used for task functions.

Today we look to artificial light for ways to surprise and delight,
changing the perception of space to unveil its full potential.

Artificial lighting is finally free to express its full potential
as the conveyor of emotion.



LED LIGHT, A NEW WAY OF LIGHTING

LED lighting has sparked a new interest in illumination.
Today, more and more people are interested in the quality of lighting
and the possibilities to personalize lighting effects and render them unique.

Thanks to LED light applications, lighting can now set off the qualities and features
of natural materials to their best advantage and become
an integrated part of furniture or architectural elements.

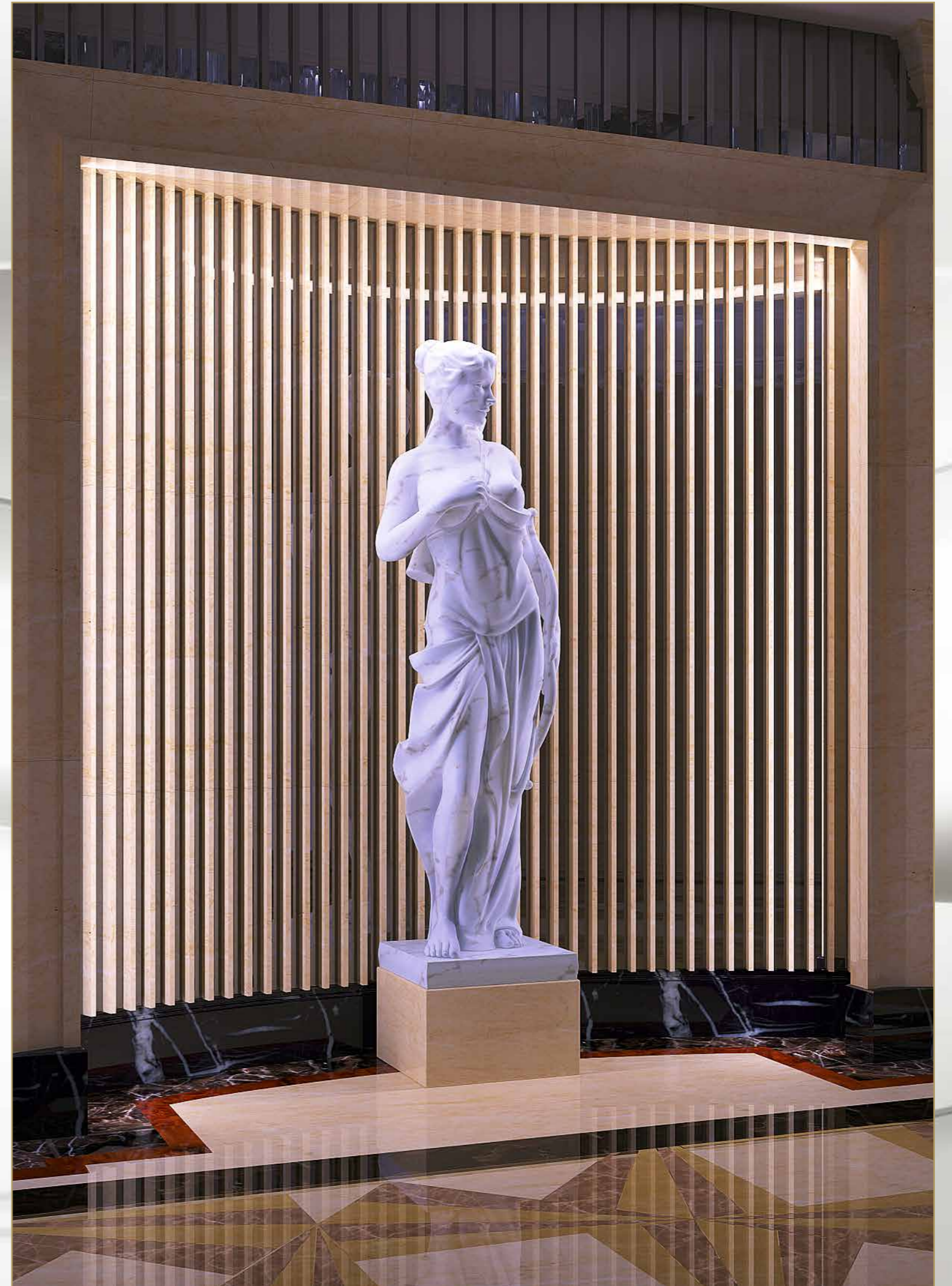
Lighting Design has become a specialty unto itself where technology is constantly evolving
and cultural and emotional elements blend with color and intensity.

To get the most out of the infinite potential of LED lighting solutions it's important to make
lighting an integral part of any construction project right from the drawing board.



THE QUALITY OF LIGHT

A quality lighting solution delights the beholder thanks to the technology and planning that stand invisibly behind the light itself.

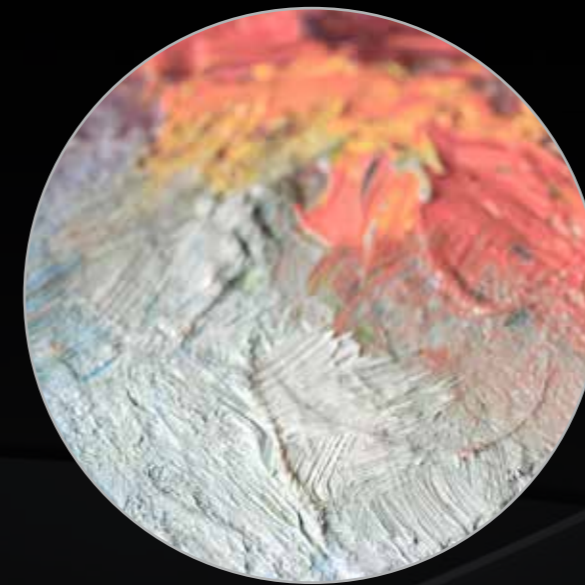


WHEN LIGHT IS QUALITY

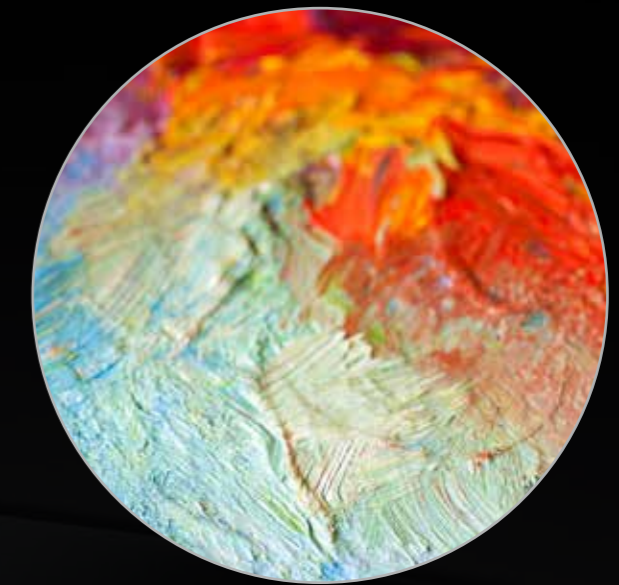
A LIGHTING SOLUTION is all that it should be when the various elements that stand behind it are top quality.

The LED sources have to emit a light with a high C.R.I. (Color Rendering Index) throughout the spectrum like natural light.

The LED sources have to emit a constant and even light flow for the entire cycle of the product's duration.



POOR SATURATION



SATURATED COLOUR



UNFOCUSED BEAM



FOCUSED BEAM



UNFOCUSED SHADOW CONTOUR



WELL DEFINED SHADOW CONTOUR

THE LEDVOLUTION

There are many parameters to describe LED (Light Emitting Diode) lighting but two of the most important ones are:

- COLOR RENDERING INDEX (C.R.I.)
- COLOR CONSISTENCY

This is a bit technical, but XICATO LED light with a high CRI (Color Rendering Index) of 98, tested on 15 sample colours, with a R₉ of 98 and a very high tolerance for white light with 1X2 MacAdam Ellipses that keeps its chromatic coherence for its entire product cycle has become the new standard for quality in LED lighting.

THE LIGHT EMITTED FROM A LED LIGHT WITH THESE CHARACTERISTICS WILL BE SIMILAR TO NATURAL LIGHT AND THE VIEWER WILL PERCEIVE A RICHLY SATURATED GAMMA OF COLOURS.

Please note:

MacAdam ellipses describe the degree of visual homogeneity between several LED lights of the same colour temperature. Each MacAdam ellipse can be divided into seven steps. Colour changes in white light within two MacAdam ellipses of each other will not be noticeable to the average human eye.



STANDARD LED - C.R.I. 80



XICATO ARTIST SERIES - C.R.I. 98

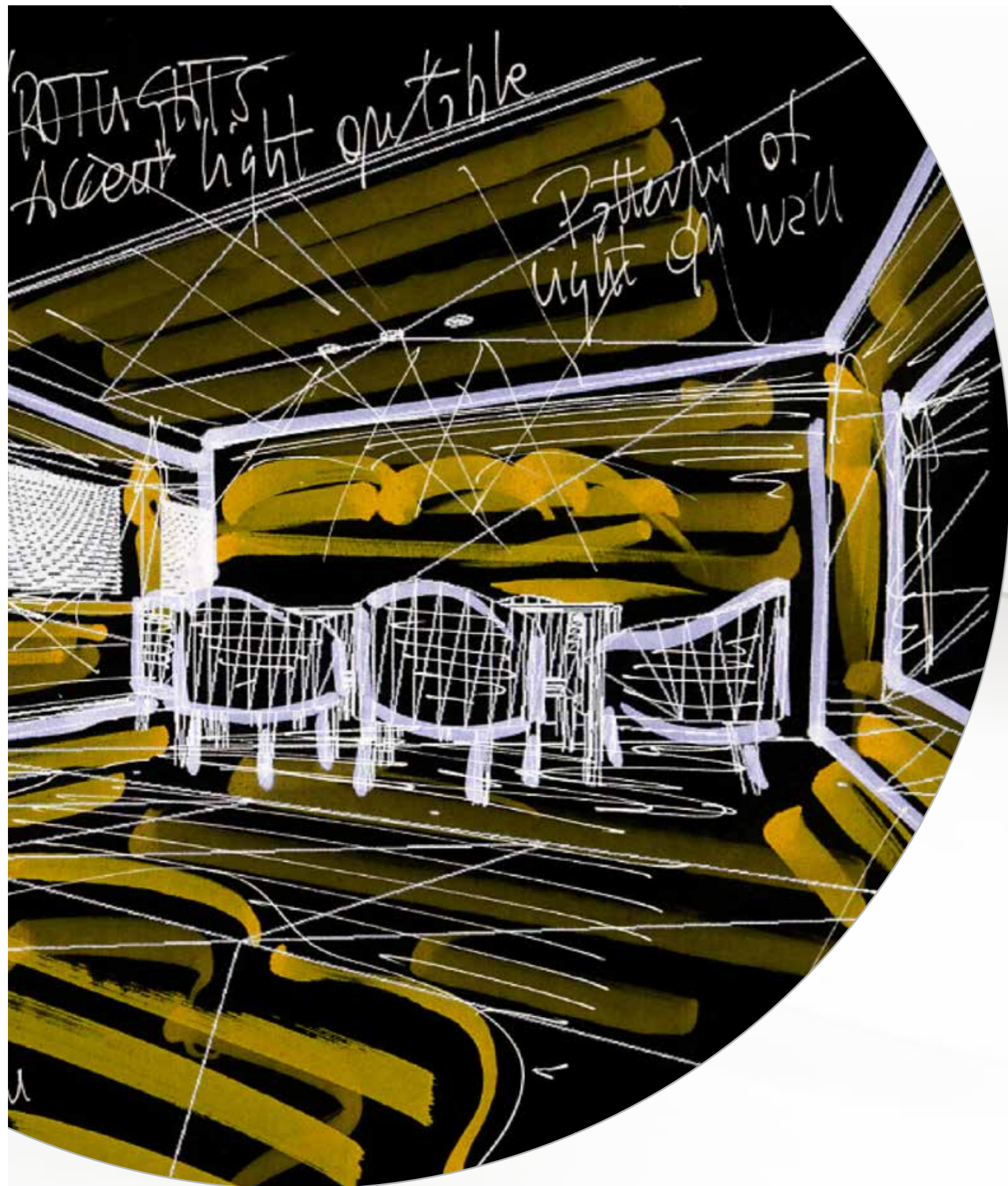


STANDARD LED - C.R.I. 80



XICATO VIBRANT SERIES - C.R.I. 98

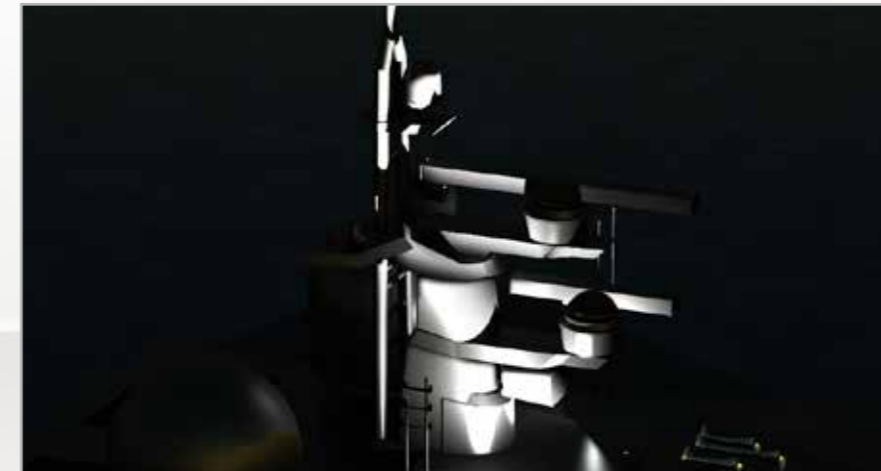




Lighting Designers are qualified professionals who can turn a vision of light into reality, transforming dreamlike concepts into technical specifications.

When lighting designers work side by side with architects and designers right from the start the lighting plan evolves along with project to create light that goes beyond illumination to become both an integrated part of and a highlight to architecture.

THE LIGHTING DESIGNER



EXTERIORS THE MEGAYACHT MAST

Beams of light are calibrated and placed to create a range of theatrical lighting effects.



EXTERIORS VILLA

Areas and pathways are studied for safety and to optimize visual impact after dark.



INTERIORS A MEGAYACHT MAIN SALOON

Areas are identified and targeted for their predicted usage and zones are illuminated to create focus points. All with various lighting options to create the right atmosphere for every moment.



PRODUCT DESIGN OTTO TABLE LAMP

The distribution of light has been studied to maximize the emotional impact of light against dark.

THE LIGHTING PLAN, MORE THAN WHAT MEETS THE EYE

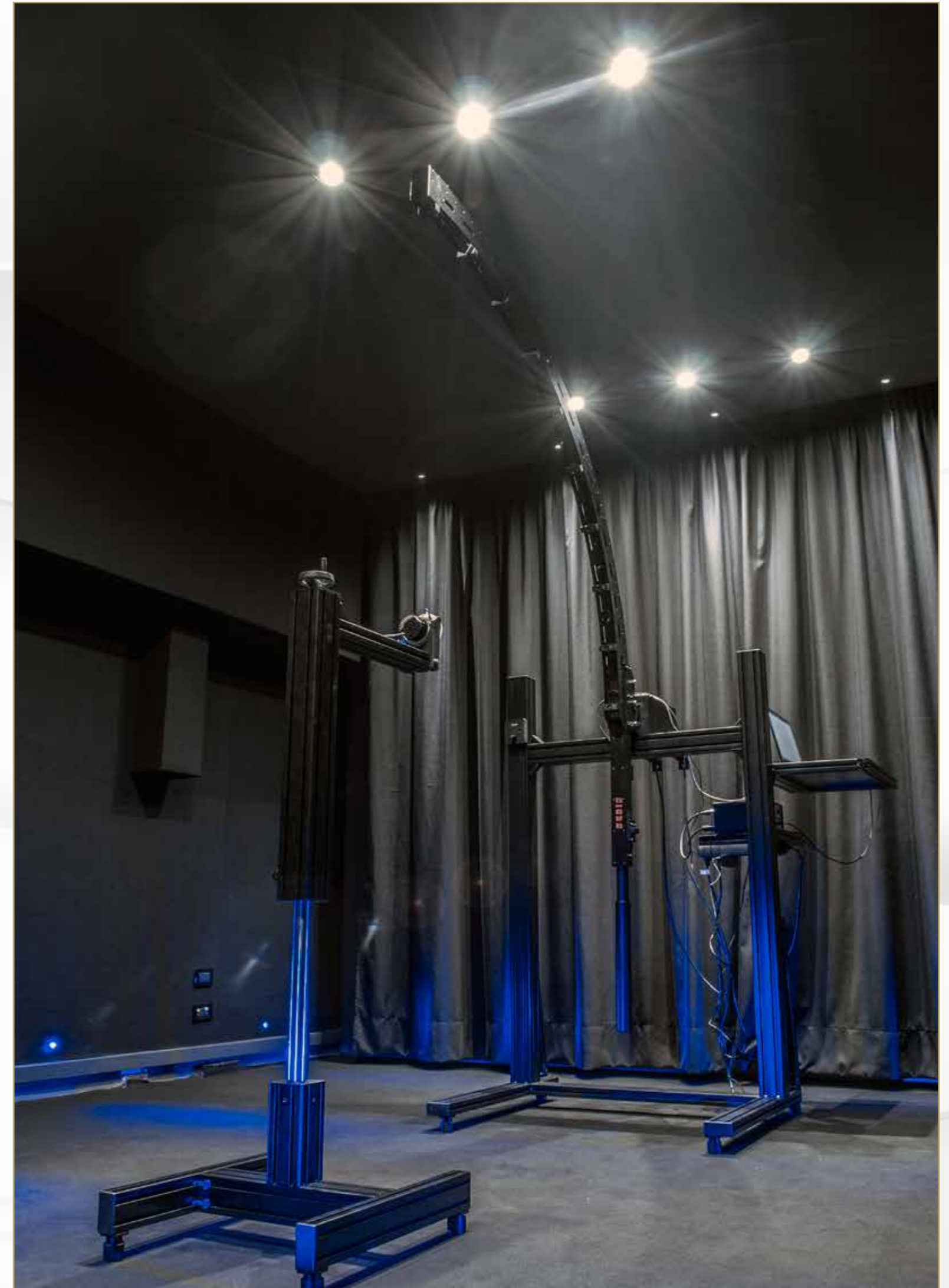
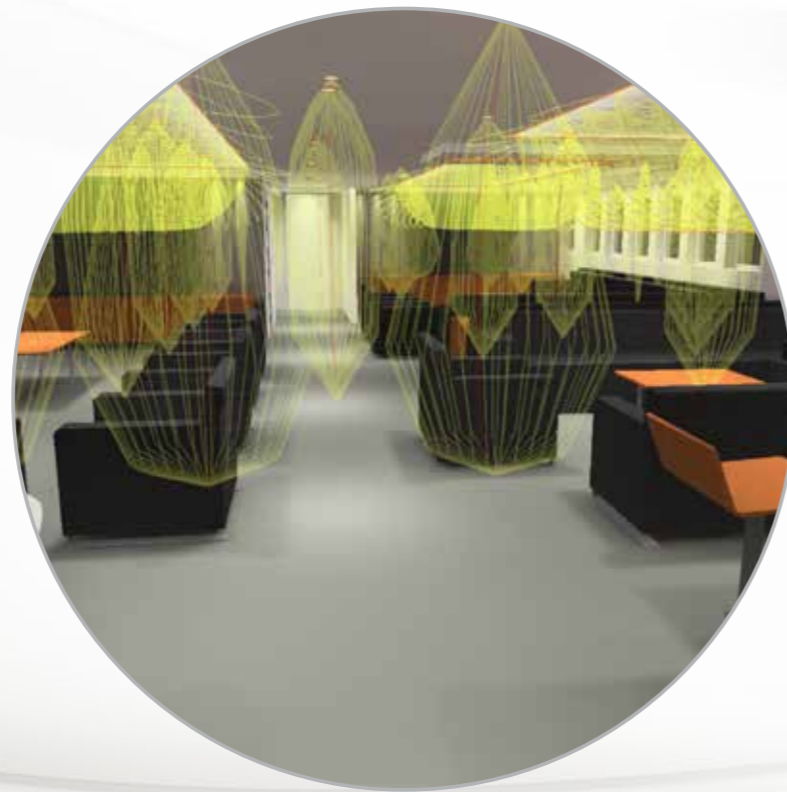
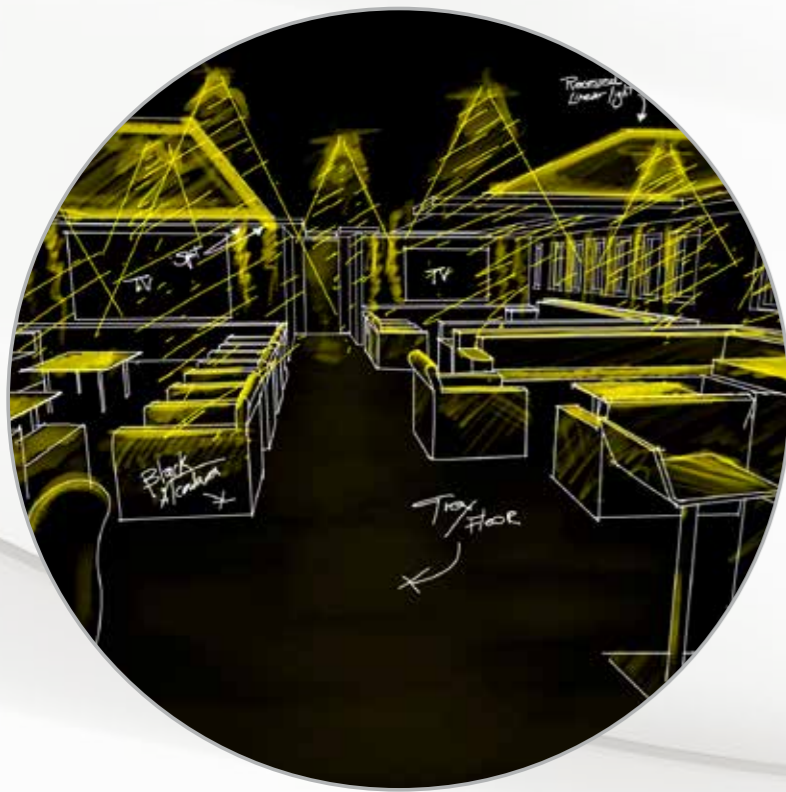
A lighting plan starts with a careful evaluation on the part of the lighting designer and the architect on ways to maximize lighting's potential to enhance space and structure. Volumes and their predicted usage, shapes, material finishes and colours are all taken into consideration.

The lighting designer then creates a concept with various scenarios that the owner can select according to the time of day or the use that he or she wishes to make of the space at any given time or during any given function.

The designer uses 3D lighting software to recreate the interior and exterior spaces and positions the selected luminaires accordingly. Perceived brightness, reflection and even bylaws are all taken into consideration along with the lighting plan's visual impact.

The result is a precise lighting plan with various effects that can be activated at the push of a button. Behind it all is a precise photometric project that has been calculated and calibrated to precisely suit the environment in question.

Once the concept has been drawn, it is finalized and becomes a written lighting plan with specified luminaires, their technical details, placement, positioning and beam size already calibrated to suit the space they will be installed in.



ALABASTER

Light from a Stone



ALABASTER

Alabaster is a sedimentary rock that comes in two varieties: oriental alabaster or “alabastrite”, and a chalky, much softer variety that is generally white and looks similar to marble.

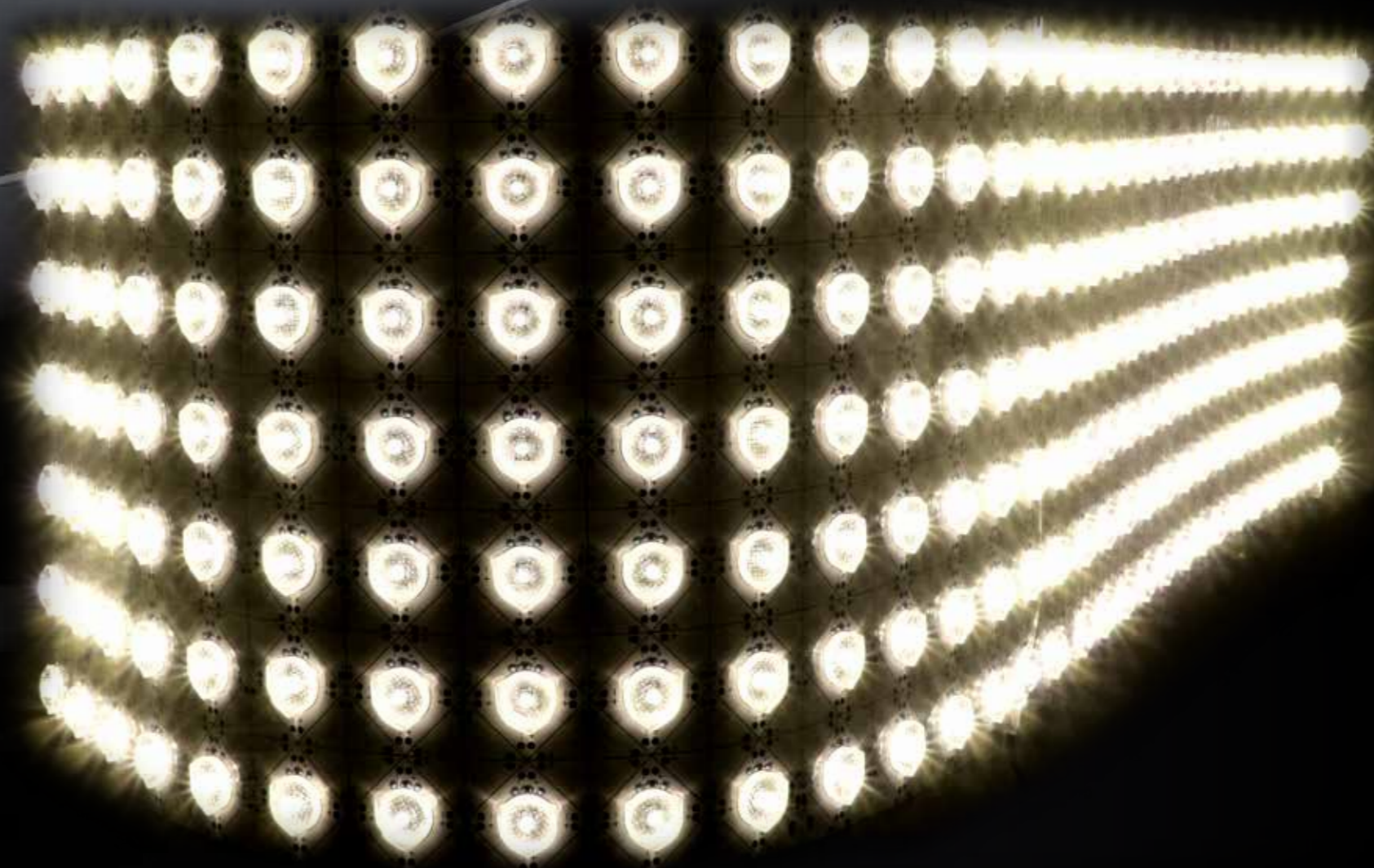
Would you ever expect light from a stone? Of course not, and yet alabaster is a stone with unusual light diffusing qualities that can come alive when backlit to create objects that surprise and delight.

On top of being easy to work, very decorative and naturally elegant, alabaster can be used in combination with light and other materials from wood to steel to create light sources that are beautiful at any time of day.



LLP SIDE FLUX

A new shape of light



UNIFORM LIGHTING ALONG COMPLEX SHAPES

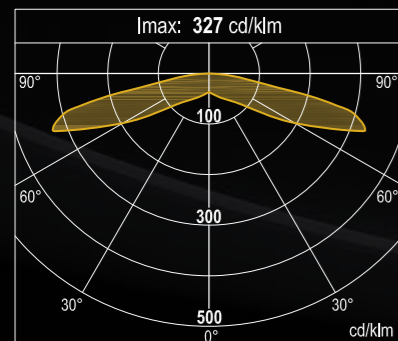
Flexible, energy efficient LED lighting modules with voltage drives that emit an even light flow and an ultrawide beam. The modules are easy to connect and can be cut to size.

LLP SIDEFLUX is ideal for backlighting translucent materials with complex shapes and very large surfaces. The ultrawide beam ensures a high luminance uniformity on translucent surfaces.



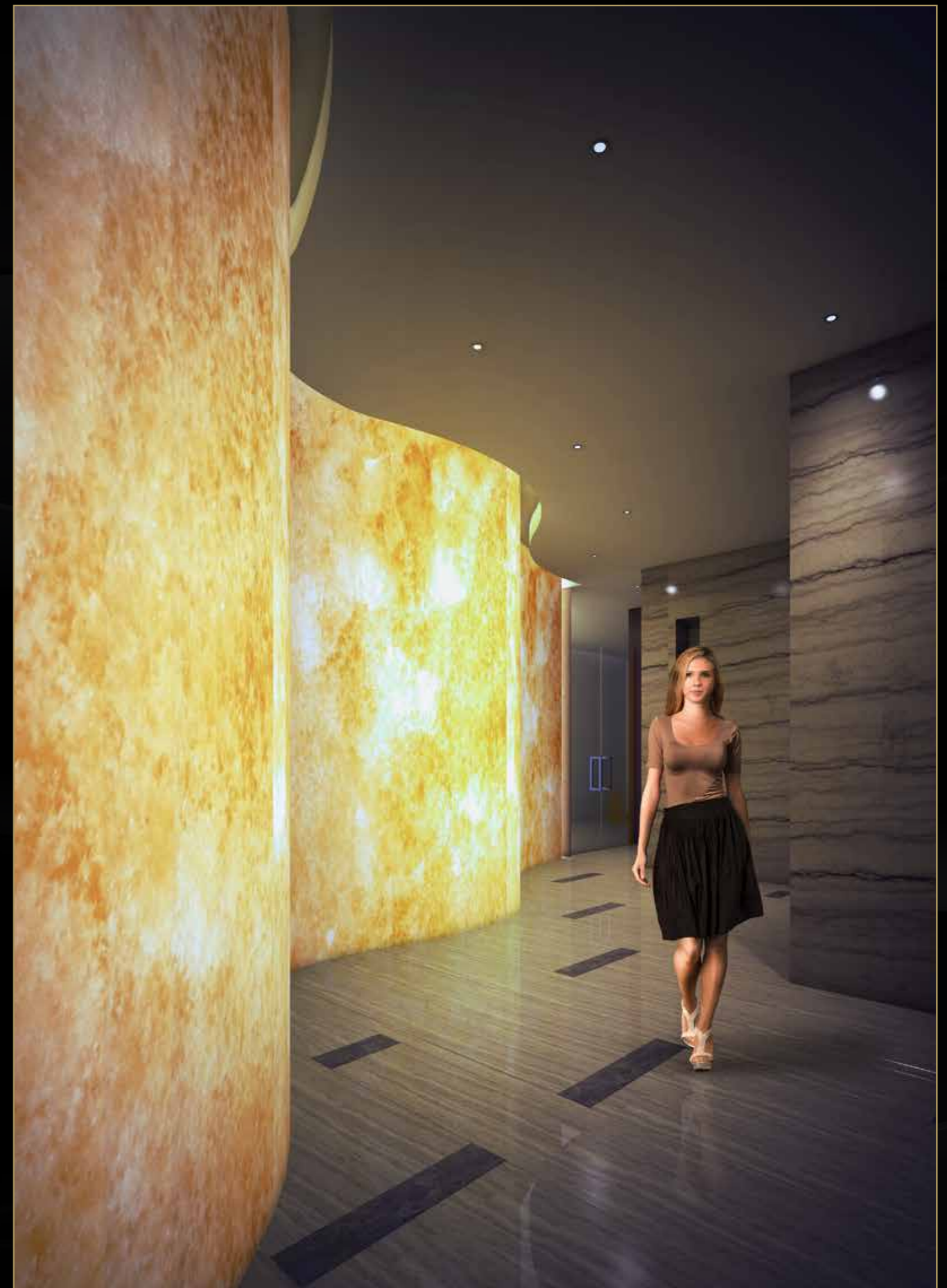
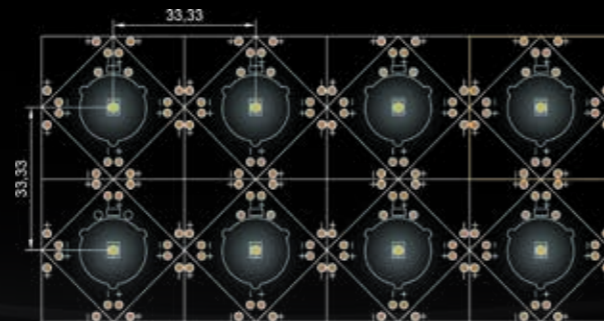
SINGLE LED BEAM ANGLE

155° UltraWide beam
Single Module emitted flux: 27 lm Efficacy: 96 lm/W



155° 0.28W		
LUX	h/m	Ø/m
4	0.5	4.6
1	1	9.2
0	1.5	13.8
0	2	18.3

Single LED Module



SOFT DIMMING LED

*Light that Changes
Like Daylight*

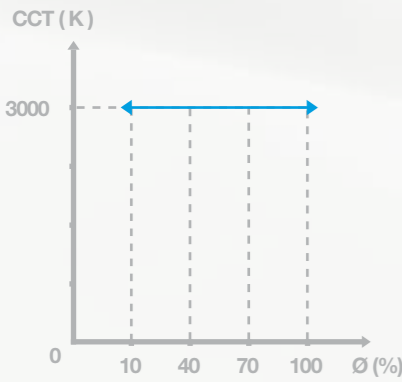
Using a special COB LED it's now possible to have an energy efficient light source that can be dimmed through a single driver maintaining a visual effect similar to that of halogen light.



STANDARD LED DIMMING



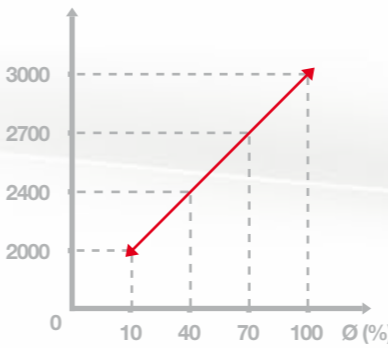
If standard LED lights are dimmed their luminosity goes down, but their colour temperature remains the same.



SOFT DIM LED DIMMING



If soft dimming LED lights are dimmed their luminosity goes down, but their colour temperature gets warmer. This kind of change is typical of natural light and triggers an instinctive feeling of comfort.



COMPANY PROFILE

Cantalupi Lighting was founded in 1951 in Camaiore, and quickly evolved from producing traditional lighting systems to installing the latest illumination technologies in luxury yachts.

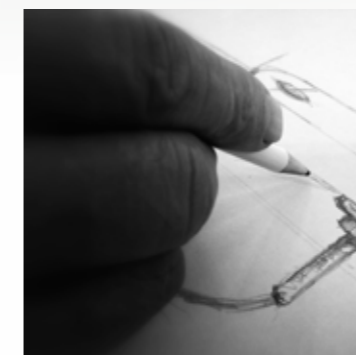
In just a few years over 500 of the world's most beautiful yachts had reliable and elegant Cantalupi systems and the company has been growing ever since. At Cantalupi we combine our unique blend of master craftsmen's knowledge with cutting edge technology and Italian taste and flair to create truly unique and beautiful lighting solutions that are always a step ahead.



RESEARCH & DEVELOPMENT



MARKETING DEPARTMENT



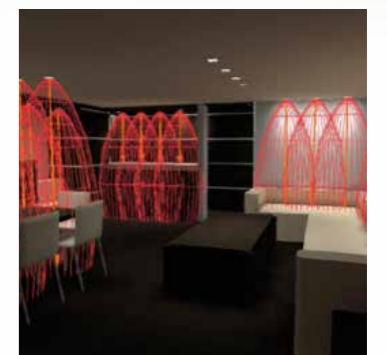
DESIGN & STYLING DEPARTMENT



ENGINEERING DEPARTMENT



TESTING & QUALITY CONTROL



LIGHTING PLANNING AND CONSULTANCY



LED LIGHTING TRAINING FOR CUSTOMERS



PHOTOREALISTIC RENDER DEVELOPMENT



CUSTOM PRODUCTION DEPARTMENT



LED LIGHTING INTEGRATIONS DEPARTMENT



PRODUCTION DEPARTMENT



ELECTRONICS DESIGN & CONSULTING



ELECTRICAL SYSTEMS DESIGN & PRODUCTION



QUALITY ASSURANCE

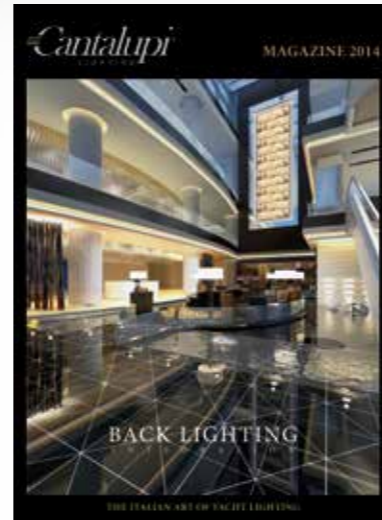
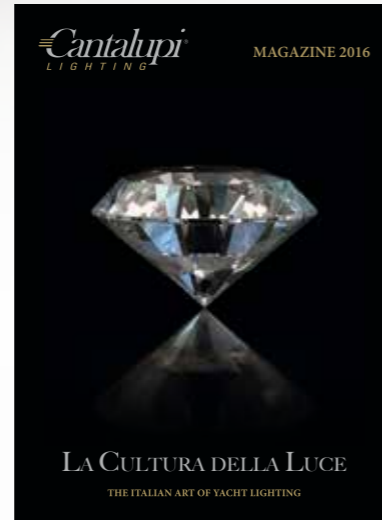


Cantalupi Lighting Magazines are our way to share information with our customers.

With years of experience in the custom lighting sector, we know that architects and interior designers are always looking for new and innovative ways to satisfy requests from high-end clients.

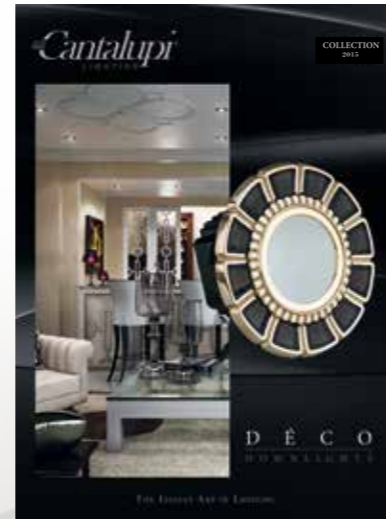
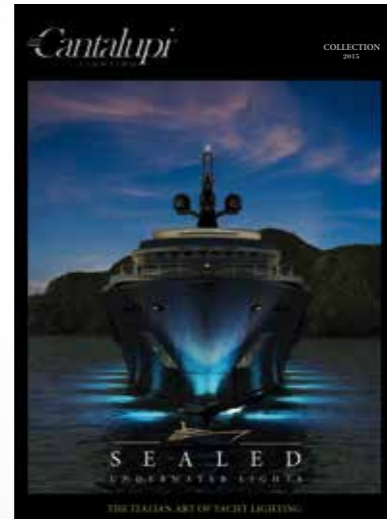
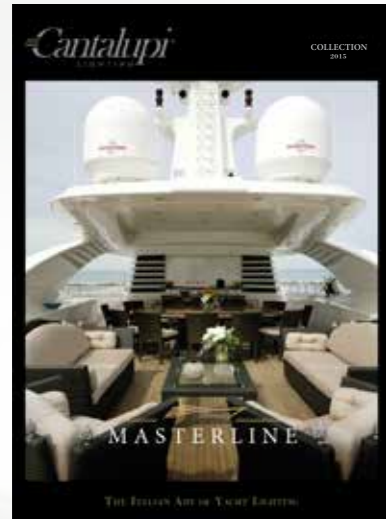
We have created these pages to update and inspire our readers with news on our latest products and installations.

Cantalupi Lighting is the source for the best design and quality contemporary LED lighting solutions.



COLLECTIONS

At Cantalupi Lighting we follow the entire manufacturing phase of every single light we create, from design to final product. Beauty, luxury, elegance and functionality characterize our designs for residential applications and the yachting sector.





Cantalupi Lighting srl
via Fosso Legnami, 217
55040 Piano di Mommio (LU)
ITALY

Tel. +39 0584 42791
Fax +39 0584 427999
www.cantalupilighting.it
info@cantalupilighting.it

THE ITALIAN ART OF YACHT LIGHTING